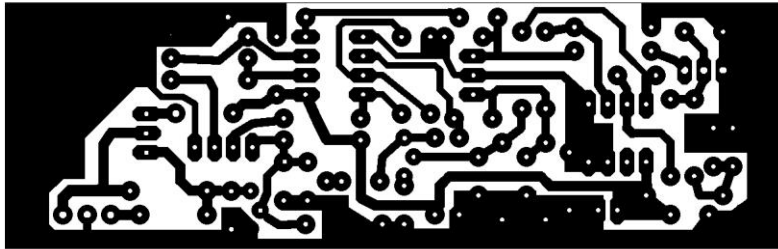


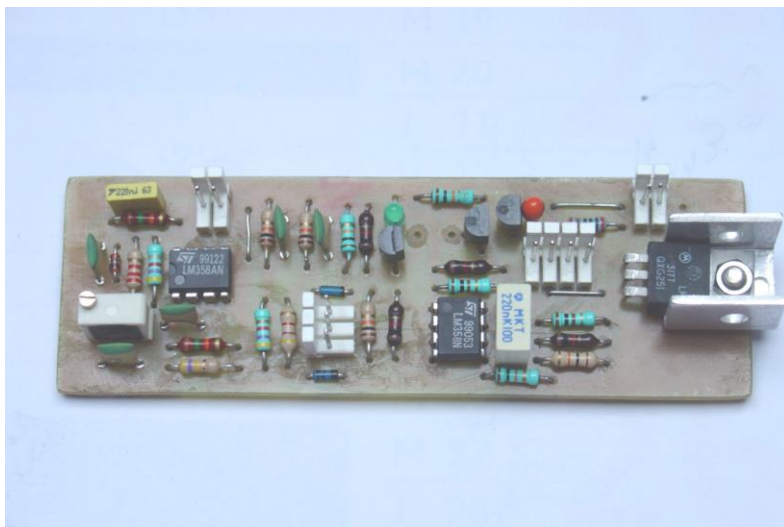
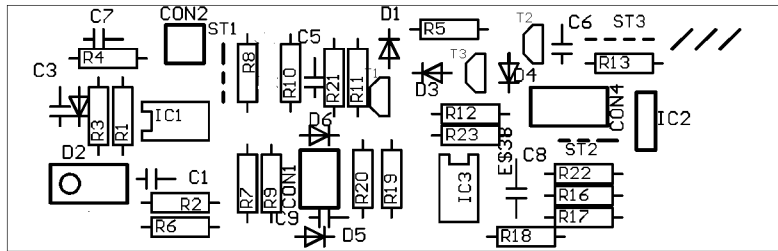
Dossier de réalisation Carte ROS (23/05/2012)
(<http://radioinitiation.chez-alice.fr>)

1) Cuivre côté soudure :

9 7 u b u o s 6 t o c



2) Implantation : (<http://radioinitiation.chez-alice.fr>)



Liste de composant Carte ROS

(<http://radioinitiation.chez-alice.fr>)

1) Résistances :

R1,R3,R7,R8,R9,R24 =4.7K Ω
R4 =15K Ω
R5,R10,R17,R18,R20,R21 =10K Ω
R2, R6 =470K Ω
R11,R16,R19,R25 =1K Ω
R12,R13 =220 Ω
R14=Pot 2.2K Ω
R15=Adjustable 10K Ω
R22,R23=100 Ω

2) Condensateurs

C1, C3, C5, C9=22nF
C6=1 μ F/35V
C7, C8 =220nF/50V
C2, C4: NC

3) Diodes, Transistors & Circuits Intégrés :

D1=Led 3mm Rouge
D2=BAT85
D3=Zener 12V
D4=Zener 4.7V
D5,D6=1N4148
T1=BRY51
T2,T3=2N2222
IC1,IC3=LM358
IC2=LM317